



LONGBOARD®
INSPIRING FACADES

A photograph of a modern multi-story building facade. The building features a mix of materials, including light-colored concrete panels with small circular indentations, dark wood accents around windows and balconies, and large glass windows. A balcony with a white metal railing is visible in the middle ground. A young tree stands in the foreground. The sky is blue with light clouds.

INSPIRING FACADES
LONGBOARD®

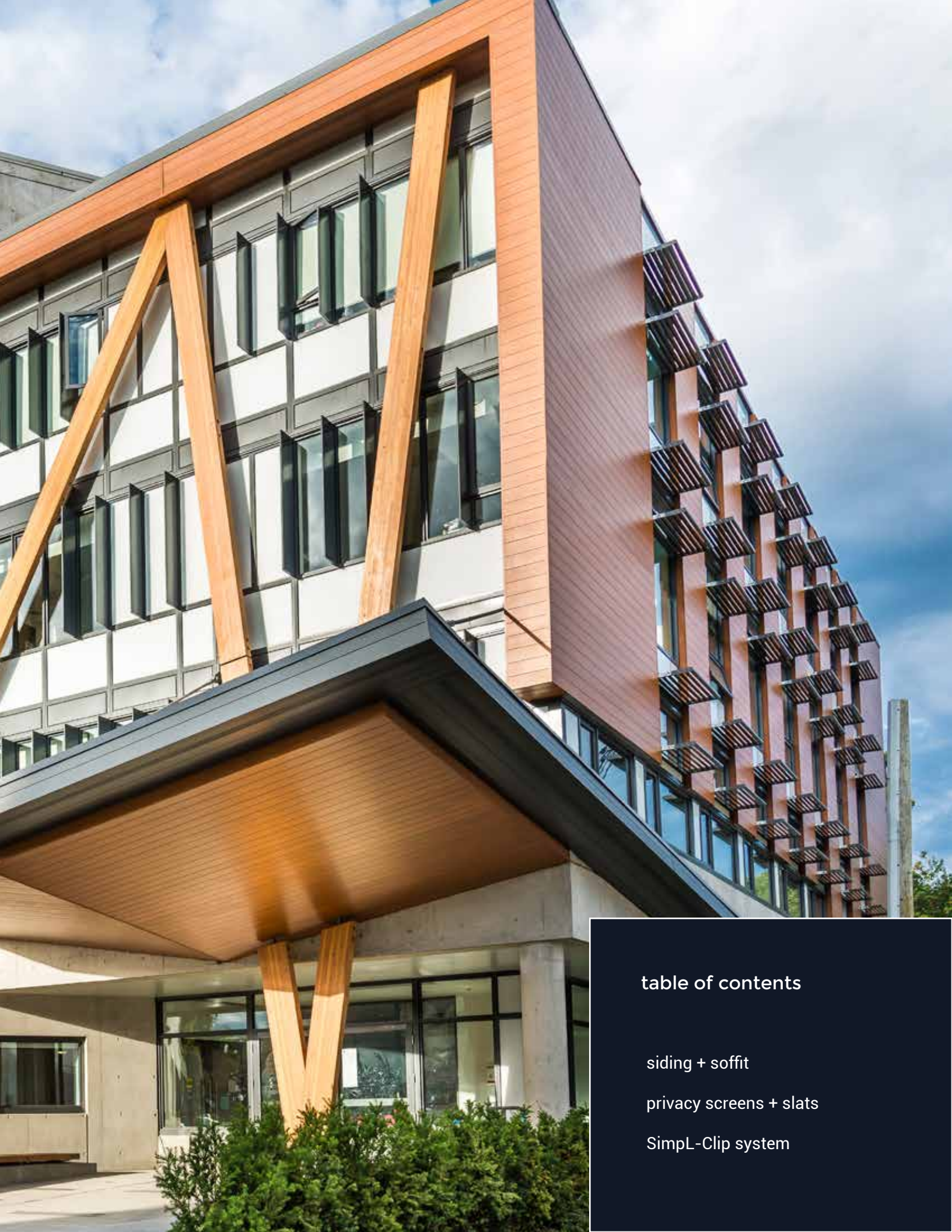
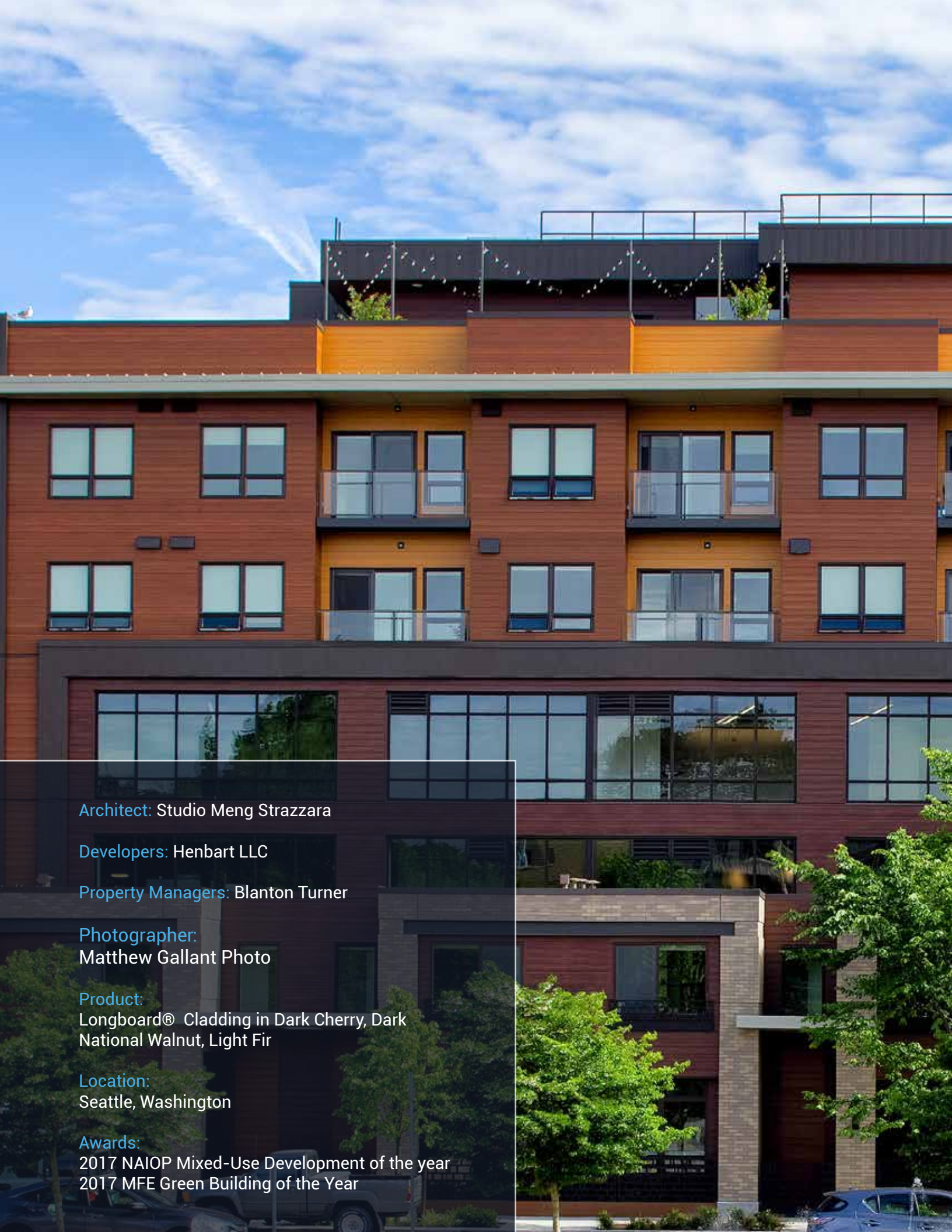


table of contents

siding + soffit

privacy screens + slats

SimpL-Clip system



Architect: Studio Meng Strazzara

Developers: Henbart LLC

Property Managers: Blanton Turner

Photographer:
Matthew Gallant Photo

Product:
Longboard® Cladding in Dark Cherry, Dark
National Walnut, Light Fir

Location:
Seattle, Washington

Awards:
2017 NAIOP Mixed-Use Development of the year
2017 MFE Green Building of the Year



siding + soffit

- adaptable to most designs
- material delivered within 4 weeks
- easy tongue + groove fittings
- fire code compliant
- response time within 24 hours
- architectural grade finishes
- non-depreciating 15 year warranty
- health product declarations
- support for specifications + drawings



easy to use	quick delivery
solid warranty	durable finishes

longboardproducts.com





siding + soffit

Project:

The Towns at Emerald City

Location:

1 Forest Manor Rd in Henry Farm,
North York, Toronto

Developer:

Elad Canada

Architect:

WZMH Architects

Installer:

Frost Inc

Photographer:

Philip Castleton Photography Inc.

Product:

Longboard® 6" Channel Light Cherry

longboardproducts.com



Designer: Slater Design

Product:
Longboard® 1X3 Privacy Screen tubes in Light Cherry

Location: Phoenix, Arizona

Photographer: David Marquardt Architectural Photography



privacy screens + slats

- adaptable to most designs
- material delivered within 4 weeks
- back and side fittings for standardized installs
- fire code compliant
- response time within 24 hours
- architectural grade finishes
- non-depreciating 15 year warranty
- health product declarations
- support for specifications + drawings



easy to use	quick delivery
solid warranty	durable finishes

longboardproducts.com

STARBUCKS COFFEE





privacy screens + slats

Project:

Starbucks facade reno

Location:

CF Toronto Eaton Centre

Product:

Longboard® 1 X 3 Privacy Screen System in Light Cherry

Photographer:

Philip Castleton Photography Inc.

longboardproducts.com

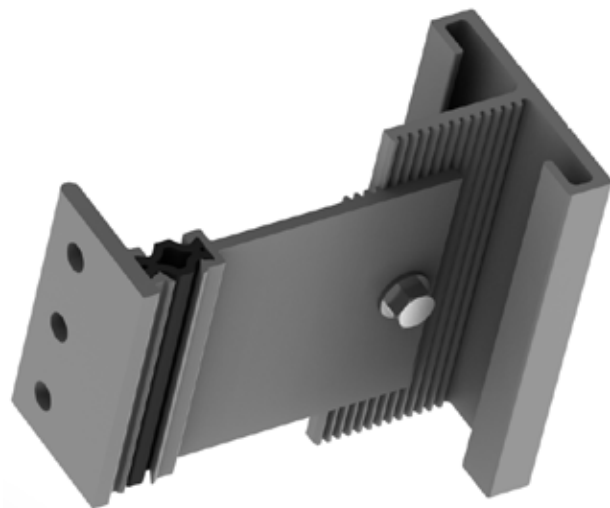


Vertical Spacing (inches)	Exterior Insulation Thickness (inches)	Exterior Insulation Nominal R-Value hroFft2/BTU(m2K/W)	Assembly U- Value hr°BTU/ hroFft2 (W/m2K)"	Assembly Effective R-Value hr°Fft2/BTU (m2K/W)
24	3	"R-12.6 (2.22)"	"0.048 (0.270)"	"R-21.0 (3.70)"
	4	"R-16.8 (2.96)"	"0.041 (0.232)"	"R-24.5 (4.32)"
	5	"R-21.0 (3.70)"	"0.036 (0.205)"	"R-27.7 (4.89)"
36	3	"R-12.6 (2.22)"	"0.047 (0.267)"	"R-21.3 (3.74)"
	4	"R-16.8 (2.96)"	"0.040 (0.228)"	"R-24.9 (4.39)"
	5	"R-21.0 (3.70)"	"0.035 (0.199)"	"R-28.5 (5.01)"
42	3	"R-12.6 (2.22)"	"0.047 (0.266)"	"R-21.4 (3.76)"
	4	"R-16.8 (2.96)"	"0.040 (0.226)"	"R-25.1 (4.42)"
	5	"R-21.0 (3.70)"	"0.035 (0.198)"	"R-28.7 (5.06)"



SimpL-Clip System

- thermally broken
- made of light weight aluminum
- supports continuous insulation
- creates a rain screen
- response time within 24 hours
- supports other cladding up to 8 lbs per sq ft.
- adjustable for sub-wall misalignment
- health product declarations
- support for specifications + drawings
- built for seismic zones



easy to use

quick delivery

solid
warranty

durable
finishes

longboardproducts.com

 **LONGBOARD**[®]
INSPIRING FACADES



BARTLE DRUGS

THE COMMONS
— at FALLS —

CHASE

Northwestern



LONGBOARD®

INSPIRING FACADES



LONGBOARD®
INSPIRING FACADES

Longboard® Products a division Mayne Inc
27575 50 Ave Langley, BC V4W 0A2
1.800-604-0343 | 604.607.6630
longboardproducts.com